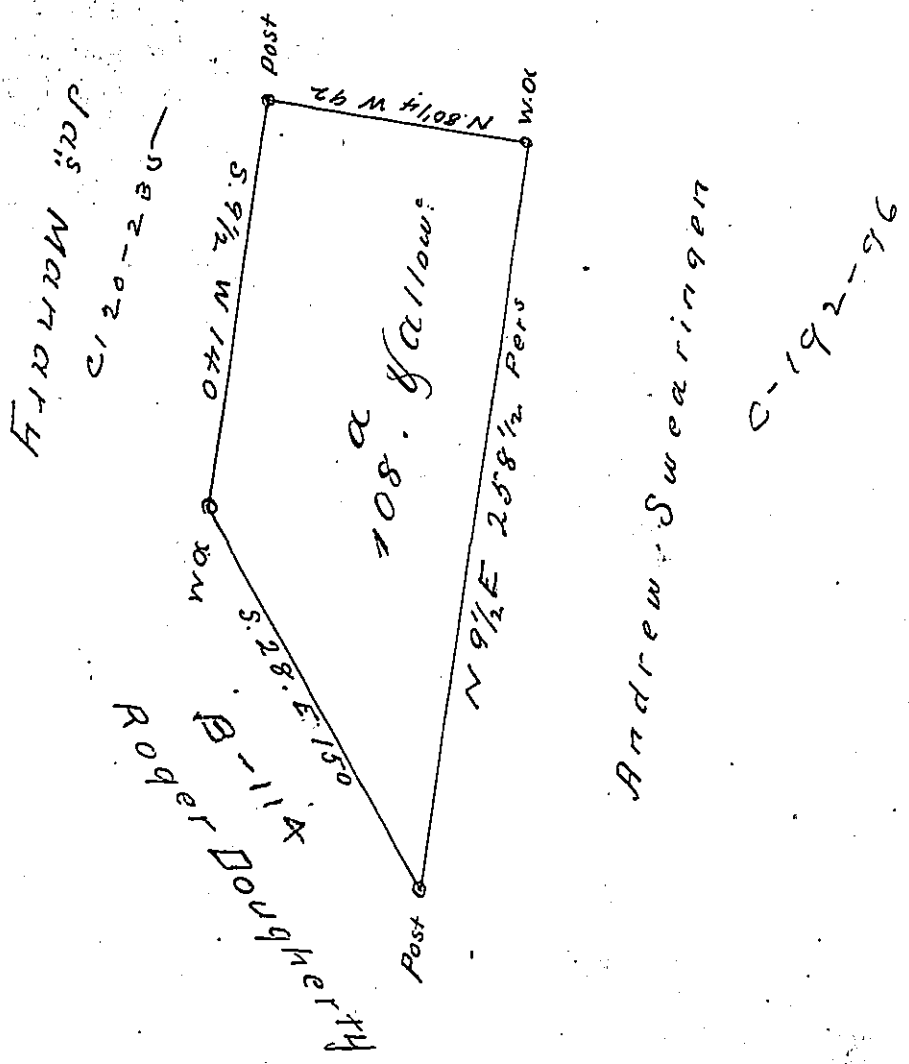


286-243

GILMAN MORTON



The above is a Draught of a Tract of Land Situate on the Waters of Chartiers Creek Cal<sup>d</sup> Berry, Containing One Hundred and Eight Acres and Usual Allowance. Surveyed the 1<sup>st</sup> day of May 1788 In pursuance of a Warrant Granted Samuel Black the 11<sup>th</sup> day of March 1788

John Hoge D.D.

John Luxens Esq<sup>r</sup>  
D. C. State of Pennel

IN TESTIMONY that the above is a copy of the original remaining on file in the Department of Internal Affairs of Pennsylvania, made conformably to an Act of Assembly approved the 16th day of February, 1833, I have hereunto set my Hand and caused the Seal of said Department to be affixed at Harrisburg, this Ninth day of November 1903

Samuel P. Brown  
Secretary of Internal Affairs.